



Dickson Place at Jackson Hill

From the \$300's
Houston, TX 77007
Phone: (281)948-0273
Fax: (713)974-2875

Sales office hours:
Saturday 10 am to 7 pm; Sundays noon to 7 pm



Natalie Glass

Driving Directions

**MODEL IS CLOSED.
CALL FOR A
SALES APPOINTMENT OR VISIT
DURING WEEKEND HOURS.**

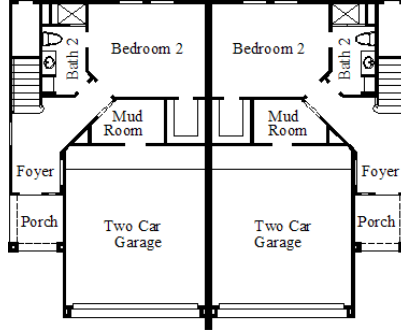
From 610 West Loop:
East on Memorial Dr.,
Left on Shepherd Dr.,
Right on Dickson St.
Community is on the right hand side

From I-10:
South on Durham Dr.,
Left on Dickson St.
(1 block North of Memorial Dr.),
Community is on the right hand side

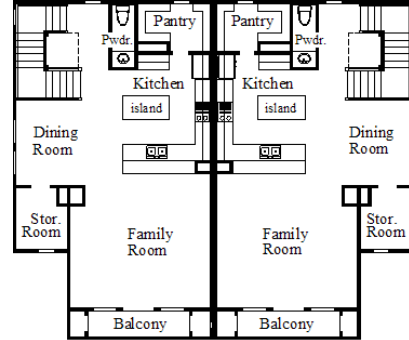
~Sq. Ft.: 2456
Stories: 3.0
Bedrooms: 3
Master: Up

Baths (f/h): 3/1
Garage: 2.0
Price: \$320,990

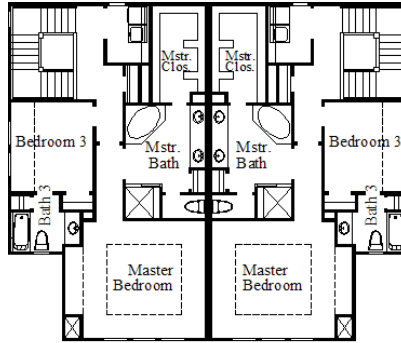
2526 / Design 2526



First Floor



Second Floor



Third Floor

Available Elevations



Elevation 1B



Elevation 3A



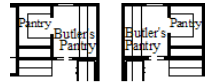
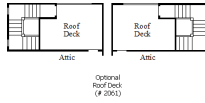
Disclaimers, Terms and Conditions of Use.

Plans, specifications, community amenities, standard features, availability and prices are subject to change without notice. Calculations for square footage of these plans were made from exterior dimensions less attached garage, if appropriate. A/C square footage is the same area less thickness of exterior walls of the same area. Square footage calculations are made based on plan dimensions only and may vary from finished square footage of the home as built. The accuracy of property tax rates, homeowners' association fees, and school district information displayed on this web site is not guaranteed by MHI or any affiliated companies. This information has been provided by third parties and is subject to change without notice. It is recommended that you ascertain the correct property tax rates, homeowners' association fees, and school district information from the appropriate authorities before you make a decision to purchase. © 2006 - 2012 Carmel Builders, All Rights Reserved. 2/4/2012

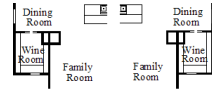


Elevation 3B

Available Options



Optional
Butler's Pantry
(# 483)



Optional
Wine Room
(# 772)



Disclaimers, Terms and Conditions of Use.

Plans, specifications, community amenities, standard features, availability and prices are subject to change without notice. Calculations for square footage of these plans were made from exterior dimensions less attached garage, if appropriate. A/C square footage is the same area less thickness of exterior walls of the same area. Square footage calculations are made based on plan dimensions only and may vary from finished square footage of the home as built. The accuracy of property tax rates, homeowners' association fees, and school district information displayed on this web site is not guaranteed by MHI or any affiliated companies. This information has been provided by third parties and is subject to change without notice. It is recommended that you ascertain the correct property tax rates, homeowners' association fees, and school district information from the appropriate authorities before you make a decision to purchase. © 2006 - 2012 Carmel Builders, All Rights Reserved. 2/4/2012