



## Covington Park at Beall Street

### Covington Park

From the \$280's

1268 Nelson Falls  
Houston, TX 77008  
**Phone:** (713)861-1534  
**Fax:** (713)861-0661

#### Sales office hours:

Tues - Sat: 10 am - 7 pm  
Sun - Mon: Noon - 7 pm



Sarah Ghandour

### Driving Directions

#### From Downtown:

Take I-10 West  
Right on T.C. Jester Blvd.,  
Go over bridge and veer  
to the right to East T.C. Jester Blvd.,  
Right on Bevis Street,  
Right on 15-1/2 St.

#### From 610 North:

Right on East T.C. Jester,  
Left on Bevis St.,  
Right on W. 15-1/2 St.

**Address:** 1233 Nelson Falls Ln  
Houston, TX 77008  
**Plan:** CP03 4A / CP03  
**MLS#:** 11539124  
**Ref#:** HXL177

**~Sq. Ft.:** 2003  
**Stories:** 3.0  
**Bedrooms:** 3  
**Master:** Up  
**Baths (f/h):** 3/1  
**Garage:** 2.0  
**Price:** \$342,287  
**Special:** **\$297,587 You Save \$44K!**

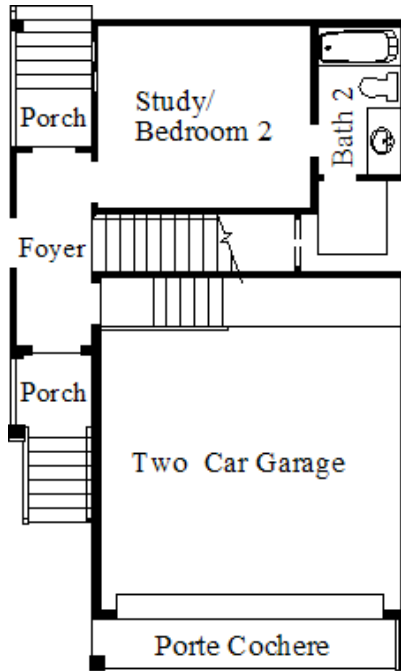
### Highlights

Craftsman style home in a luxurious wide drive community right next to White Oak Bayou Hike and Bike trails. Close to Washington Avenue without being in the congested mix! This home has 3 bedrooms, 3.5 baths with a step down living room, handscaped wood floors with coffee bean stain, guaranteed low electric bills, low maintenance, 2-year warranty, gorgeous inside and out!

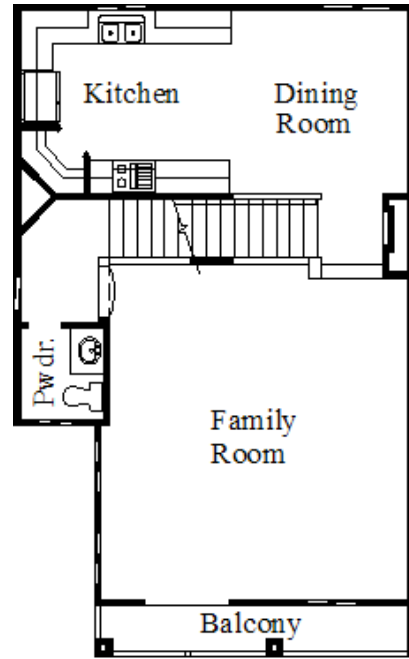


#### Disclaimers, Terms and Conditions of Use.

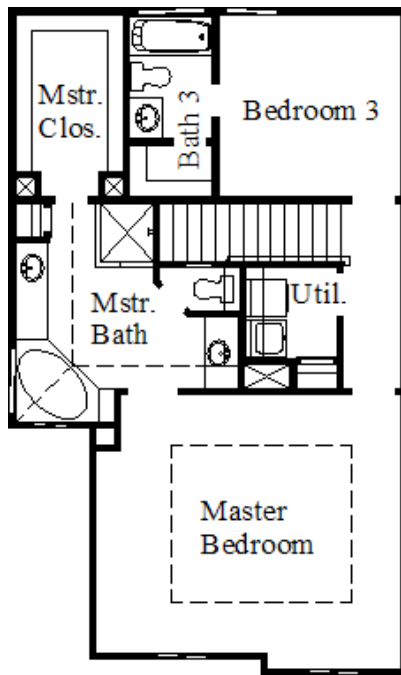
Plans, specifications, community amenities, standard features, availability and prices are subject to change without notice. Calculations for square footage of these plans were made from exterior dimensions less attached garage, if appropriate. A/C square footage is the same area less thickness of exterior walls of the same area. Square footage calculations are made based on plan dimensions only and may vary from finished square footage of the home as built. The accuracy of property tax rates, homeowners' association fees, and school district information displayed on this web site is not guaranteed by MHI or any affiliated companies. This information has been provided by third parties and is subject to change without notice. It is recommended that you ascertain the correct property tax rates, homeowners' association fees, and school district information from the appropriate authorities before you make a decision to purchase. © 2006 - 2012 Carmel Builders, All Rights Reserved. 5/18/2012



First Floor



Second Floor



Third Floor



**Disclaimers, Terms and Conditions of Use.**

Plans, specifications, community amenities, standard features, availability and prices are subject to change without notice. Calculations for square footage of these plans were made from exterior dimensions less attached garage, if appropriate. A/C square footage is the same area less thickness of exterior walls of the same area. Square footage calculations are made based on plan dimensions only and may vary from finished square footage of the home as built. The accuracy of property tax rates, homeowners' association fees, and school district information displayed on this web site is not guaranteed by MHI or any affiliated companies. This information has been provided by third parties and is subject to change without notice. It is recommended that you ascertain the correct property tax rates, homeowners' association fees, and school district information from the appropriate authorities before you make a decision to purchase. © 2006 - 2012 Carmel Builders, All Rights Reserved. 5/18/2012